



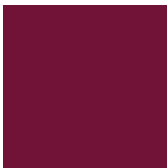
# 2024 Youth Apparel

Theme: "I am a disciple of Jesus Christ."

# 01.

## Apparel for FSY Participants

# FSY Participant T-Shirt: A (1-Color)



**SHIRT COLOR:**  
PMS 7421 C  
(Match Red 40)



**INK COLOR:**  
PMS 198 C  
(Match Red 10)

# FSY Participant T-Shirt: A (1-Color)



**SHIRT COLOR:**  
PMS 7421 C  
(Match Red 40)



**INK COLOR:**  
PMS 198 C  
(Match Red 10)

# FSY Participant T-Shirt: B (1-Color)



**SHIRT COLOR:**  
PMS 7421 C  
(Match Red 40)



**INK COLOR:**  
PMS 198 C  
(Match Red 10)

# FSY Participant T-Shirt: B (1-Color)



**SHIRT COLOR:**  
PMS 7421 C  
(Match Red 40)



**INK COLOR:**  
PMS 198 C  
(Match Red 10)

# FSY Participant T-Shirt: C (3-Color)



**SHIRT COLOR:**  
PMS 540 C  
(Match Blue 40)



**INK COLORS:**  
PMS 715 C  
(Match Yellow 20)  
  
PMS 222 C  
(Match Red 35)  
  
PMS 215 C  
(Match Red 20)

# FSY Participant T-Shirt: C (3-Color)



**SHIRT COLOR:**  
PMS 540 C  
(Match Blue 40)



**INK COLORS:**  
PMS 715 C  
(Match Yellow 20)  
  
PMS 222 C  
(Match Red 35)  
  
PMS 215 C  
(Match Red 20)



# FSY Participant Hoodie: A (1-Color)

For zipper hoodie, use this configuration.



**HOODIE COLOR:**  
PMS 215 C  
(Match Red 20)



**INK COLOR:**  
PMS 310 C  
(Match Blue 15)

# FSY Participant Hoodie: A (1-Color)

For pull-over hoodie, use this configuration.



**HOODIE COLOR:**  
PMS 215 C  
(Match Red 20)



**INK COLOR:**  
PMS 310 C  
(Match Blue 15)

# FSY Participant Hoodie: B (1-Color)

For zipper hoodie, use this configuration.



**HOODIE COLOR:**  
PMS 540 C  
(Match Blue 40)



**INK COLOR:**  
PMS Rubine Red C  
(Match Red 15)

# FSY Participant Hoodie: B (1-Color)

For pull-over hoodie, use this configuration.



**HOODIE COLOR:**  
PMS 540 C  
(Match Blue 40)



**INK COLOR:**  
PMS Rubine Red C  
(Match Red 15)

# FSY Participant Hoodie: C (3-Color)

For zipper hoodie, use this configuration.



**HOODIE COLOR:**  
PMS 540 C  
(Match Blue 40)



**INK COLORS:**  
PMS 715 C  
(Match Yellow 20)  
  
PMS 222 C  
(Match Red 35)  
  
PMS 215 C  
(Match Red 20)

# FSY Participant Hoodie: C (3-Color)

For pull-over hoodie, use this configuration.



**HOODIE COLOR:**  
PMS 540 C  
(Match Blue 40)



**INK COLORS:**  
PMS 715 C  
(Match Yellow 20)  
  
PMS 222 C  
(Match Red 35)  
  
PMS 215 C  
(Match Red 20)

FSY Participant Apparel Art

**20  
24 | FSY<sup>®</sup> |**  **3 NEPHI 5:13**

FSY Participant Apparel Art

**fsy**

**fsy**



# FSY Participant Apparel Art



	<b>INK COLORS:</b> PMS 715 C (Match Yellow 20)
	PMS 222 C (Match Red 35)
	PMS 215 C (Match Red 20)

# FSY Participant Apparel Art



**20**  
**24**



**FSY®**



**3 NEPHI 5:13**



**INK COLORS:**  
PMS 715 C  
(Match Yellow 20)  
  
PMS 222 C  
(Match Red 35)  
  
PMS 215 C  
(Match Red 20)

# 02.

## Apparel for FSY Staff

# FSY Staff T-Shirt: A (1-Color)



**SHIRT COLOR:**  
PMS Rubine Red C  
(Match Red 15)



**INK COLOR:**  
PMS 222 C  
(Match Red 35)

# FSY Staff T-Shirt: A (1-Color)

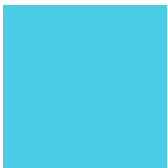


**SHIRT COLOR:**  
PMS Rubine Red C  
(Match Red 15)



**INK COLOR:**  
PMS 222 C  
(Match Red 35)

# FSY Staff T-Shirt: B (1-Color)

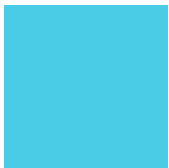


**SHIRT COLOR:**  
PMS 310 C  
(Match Blue 15)



**INK COLOR:**  
PMS 198 C  
(Match Red 10)

# FSY Staff T-Shirt: B (1-Color)

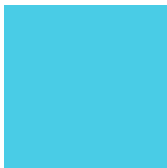
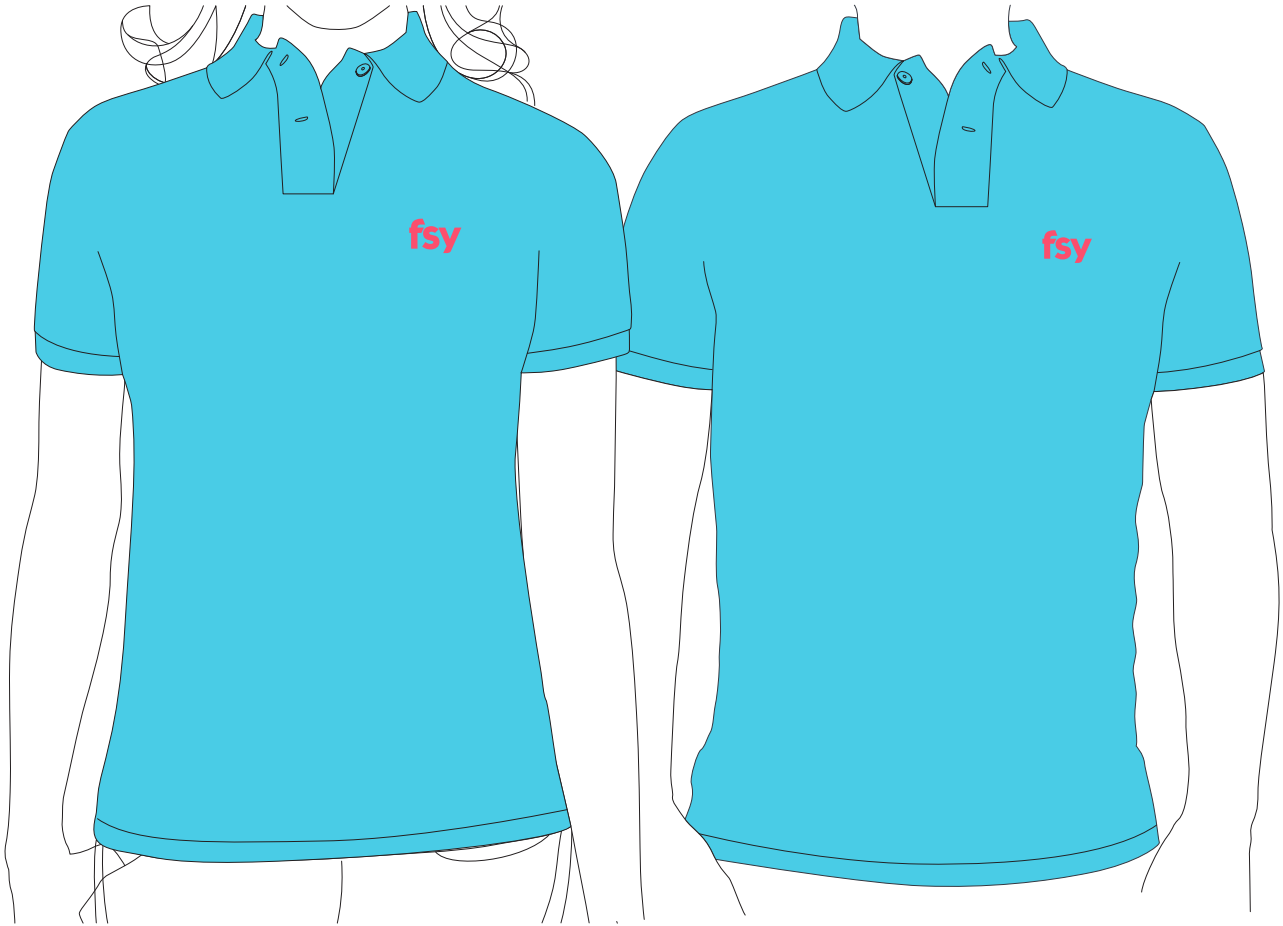


**SHIRT COLOR:**  
PMS 310 C  
(Match Blue 15)



**INK COLOR:**  
PMS 198 C  
(Match Red 10)

# FSY Staff Polo: A (1-Color)



**SHIRT COLOR:**  
PMS 310 C  
(Match Blue 15)



**INK COLOR:**  
PMS 198 C  
(Match Red 10)



# FSY Staff Polo: B (1-Color)



**SHIRT COLOR:**  
PMS Rubine Red C  
(Match Red 15)



**INK COLOR:**  
PMS 222 C  
(Match Red 35)

# FSY Staff Apparel Art



# 03.

Apparel for Youth (General)

# Youth T-shirt: A (1-Color)



**SHIRT COLOR:**  
PMS 7421 C  
(Match Red 40)



**INK COLOR:**  
PMS 198 C  
(Match Red 10)

# Youth T-shirt: A (1-Color)



**SHIRT COLOR:**  
PMS 7421 C  
(Match Red 40)



**INK COLOR:**  
PMS 198 C  
(Match Red 10)

## Youth T-Shirt: B (1-Color)



**SHIRT COLOR:**  
PMS 7421 C  
(Match Red 40)



**INK COLOR:**  
PMS 198 C  
(Match Red 10)

## Youth T-Shirt: B (1-Color)



**SHIRT COLOR:**  
PMS 7421 C  
(Match Red 40)



**INK COLOR:**  
PMS 198 C  
(Match Red 10)

## Youth T-Shirt: C (3-Color)



**SHIRT COLOR:**  
PMS 540 C  
(Match Blue 40)



**INK COLORS:**  
PMS 715 C  
(Match Yellow 20)

PMS 222 C  
(Match Red 35)

PMS 215 C  
(Match Red 20)



## Youth T-Shirt: C (3-Color)



**SHIRT COLOR:**  
PMS 540 C  
(Match Blue 40)



**INK COLORS:**  
PMS 715 C  
(Match Yellow 20)  
  
PMS 222 C  
(Match Red 35)  
  
PMS 215 C  
(Match Red 20)

## Youth Hoodie: A (1-Color)

For pull-over hoodie, use this configuration.



**HOODIE COLOR:**  
PMS 215 C  
(Match Red 20)



**INK COLOR:**  
PMS 310 C  
(Match Blue 15)

## Youth Hoodie: A (1-Color)

For pull-over hoodie, use this configuration.



**HOODIE COLOR:**  
PMS 215 C  
(Match Red 20)



**INK COLOR:**  
PMS 310 C  
(Match Blue 15)

## Youth Hoodie: B (1-Color)

For pull-over hoodie, use this configuration.



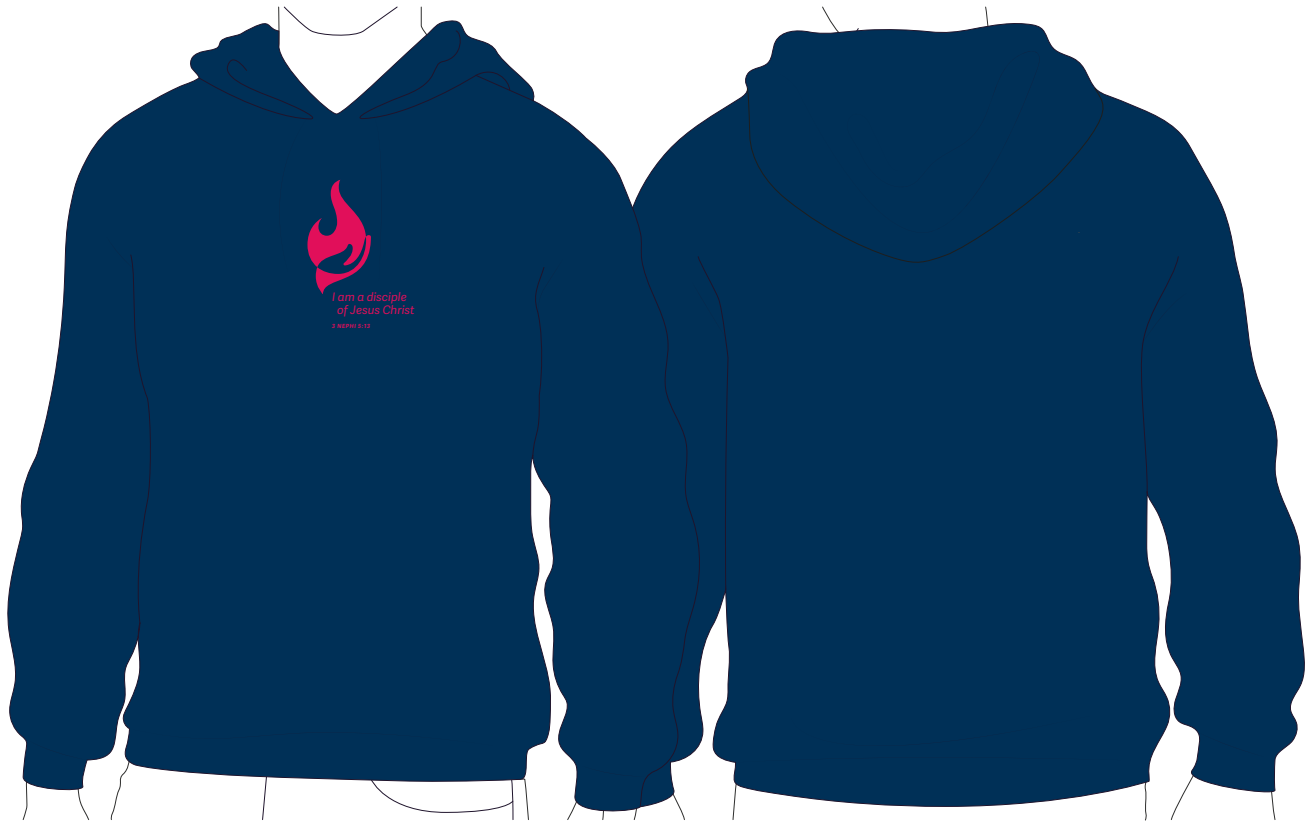
**HOODIE COLOR:**  
PMS 540 C  
(Match Blue 40)



**INK COLOR:**  
PMS Rubine Red C  
(Match Red 15)

## Youth Hoodie: B (1-Color)

For pull-over hoodie, use this configuration.



**HOODIE COLOR:**  
PMS 540 C  
(Match Blue 40)



**INK COLOR:**  
PMS Rubine Red C  
(Match Red 15)

# Youth Hoodie: C (3-Color)

For zipper hoodie, use this configuration.



**HOODIE COLOR:**  
PMS 540 C  
(Match Blue 40)



**INK COLORS:**  
PMS 715 C  
(Match Yellow 20)

PMS 222 C  
(Match Red 35)

PMS 215 C  
(Match Red 20)

## Youth Hoodie: C (3-Color)

For pull-over hoodie, use this configuration.



**HOODIE COLOR:**  
PMS 540 C  
(Match Blue 40)



**INK COLORS:**  
PMS 715 C  
(Match Yellow 20)

PMS 222 C  
(Match Red 35)

PMS 215 C  
(Match Red 20)





Youth Apparel Art

*I am a disciple  
of Jesus Christ*

**3 NEPHI 5:13**

# Youth Apparel Art



	<b>INK COLORS:</b> PMS 715 C (Match Yellow 20)
	PMS 222 C (Match Red 35)
	PMS 215 C (Match Red 20)

# Youth Apparel Art



—  
20  
24  
—

**3 NEPHI 5:13**



**INK COLORS:**  
PMS 715 C  
(Match Yellow 20)  
  
PMS 222 C  
(Match Red 35)  
  
PMS 215 C  
(Match Red 20)

