



# Au Utu

Karaki Ake A Uotiira n Ikotiira



# Te boki aei ana bwai:

---

“Ti kunei bwaai tabeua ibon ibukira ngkana  
ti reiakin rongorongoia ara bakatibu.”

Beretitenti Thomas S. Monson  
Ana Ekaretia Iesu Kristo ibukiia  
Aika Itiaki ni Boong aika Kaitira

“Koaua aika Teimatoa n Taai aika Bibitaki,”  
*Ensign ke Riaona, Meei 2005, 21*



# Waakinna Ngkai

Katauraoko n te maiu n tamnei. Ngkanne irii mwaneka aika a bee-bete aikai n namakina te Tamnei ao karikia bwa am utu a na karekei kakabwaia man otenanti n te tembora.



## Taetae

ma am utu, ao kanoa te boki aei ibukiia am bakatibu ao aia utu.



## Koroi

rongorongo ake ko a tia ni ikoikotii n [FamilySearch.org](https://www.familysearch.org). Ngkana ko kainnanaoa buokam, tuangiia kain te utu ke kain te uote ibukin te ibuobuoki.

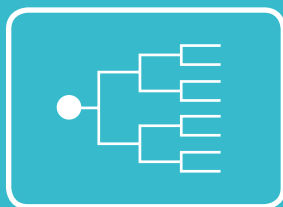


## Nakon

te tembora n tei ibukiia am bakatibu, ke bubuti ibukin te ibuobuoki.

Au Karaki

Ngai

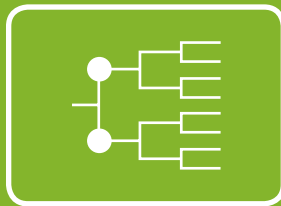




# Au Karo



Au Utu









# Tariu ao Mwaneu

Mwakena te baaki irarikin te ara are ko a tia ni karaoa te otenanti n te tembora ibukina:

Ara \_\_\_\_\_  
 Bong ni bung \_\_\_\_\_ Tabo \_\_\_\_\_  
Bong ni Mate \_\_\_\_\_ Tabo \_\_\_\_\_

Ara \_\_\_\_\_  
 Bong ni bung \_\_\_\_\_ Tabo \_\_\_\_\_  
Bong ni Mate \_\_\_\_\_ Tabo \_\_\_\_\_

Ara \_\_\_\_\_  
 Bong ni bung \_\_\_\_\_ Tabo \_\_\_\_\_  
Bong ni Mate \_\_\_\_\_ Tabo \_\_\_\_\_

Ara \_\_\_\_\_  
 Bong ni bung \_\_\_\_\_ Tabo \_\_\_\_\_  
Bong ni Mate \_\_\_\_\_ Tabo \_\_\_\_\_

Ara \_\_\_\_\_  
 Bong ni bung \_\_\_\_\_ Tabo \_\_\_\_\_  
Bong ni Mate \_\_\_\_\_ Tabo \_\_\_\_\_

Ara \_\_\_\_\_  
 Bong ni bung \_\_\_\_\_ Tabo \_\_\_\_\_  
Bong ni Mate \_\_\_\_\_ Tabo \_\_\_\_\_

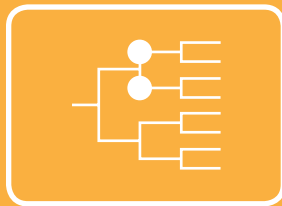
Ara \_\_\_\_\_  
 Bong ni bung \_\_\_\_\_ Tabo \_\_\_\_\_  
Bong ni Mate \_\_\_\_\_ Tabo \_\_\_\_\_

Ara \_\_\_\_\_  
 Bong ni bung \_\_\_\_\_ Tabo \_\_\_\_\_  
Bong ni Mate \_\_\_\_\_ Tabo \_\_\_\_\_

# Tibu



N ana Itera Tamau







# Natiia Tibu

Mwakena te baaki irarikin te ara are ko a tia ni karaoa te otenanti n te tembora ibukina:

Ara \_\_\_\_\_

Bong ni bung \_\_\_\_\_ Tabo \_\_\_\_\_

Bong ni Mate \_\_\_\_\_ Tabo \_\_\_\_\_

Ara \_\_\_\_\_

Bong ni bung \_\_\_\_\_ Tabo \_\_\_\_\_

Bong ni Mate \_\_\_\_\_ Tabo \_\_\_\_\_

Ara \_\_\_\_\_

Bong ni bung \_\_\_\_\_ Tabo \_\_\_\_\_

Bong ni Mate \_\_\_\_\_ Tabo \_\_\_\_\_

Ara \_\_\_\_\_

Bong ni bung \_\_\_\_\_ Tabo \_\_\_\_\_

Bong ni Mate \_\_\_\_\_ Tabo \_\_\_\_\_

Ara \_\_\_\_\_

Bong ni bung \_\_\_\_\_ Tabo \_\_\_\_\_

Bong ni Mate \_\_\_\_\_ Tabo \_\_\_\_\_

Ara \_\_\_\_\_

Bong ni bung \_\_\_\_\_ Tabo \_\_\_\_\_

Bong ni Mate \_\_\_\_\_ Tabo \_\_\_\_\_

Ara \_\_\_\_\_

Bong ni bung \_\_\_\_\_ Tabo \_\_\_\_\_

Bong ni Mate \_\_\_\_\_ Tabo \_\_\_\_\_

Ara \_\_\_\_\_

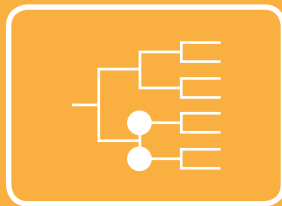
Bong ni bung \_\_\_\_\_ Tabo \_\_\_\_\_

Bong ni Mate \_\_\_\_\_ Tabo \_\_\_\_\_

# Tibu



N ana Itera Tinau



# Tibu te Unimwaane

**ARA** \_\_\_\_\_

Karaki ao kauring Ibukina:



Katuka te  
Tamnei Ikai

Karina n te  
FamilySearch.org



ENG



E Bwanin te Mwakuri  
n te Tembora



ENG



Bong ni bung \_\_\_\_\_

Te Tabo \_\_\_\_\_

Bong ni Mate \_\_\_\_\_

Te Tabo \_\_\_\_\_



Bong ni Mare \_\_\_\_\_





# Natiia Tibu

Mwakena te baaki irarikin te ara are ko a tia ni karaoa te otenanti n te tembora ibukina:

Ara \_\_\_\_\_

Bong ni bung \_\_\_\_\_ Tabo \_\_\_\_\_

Bong ni Mate \_\_\_\_\_ Tabo \_\_\_\_\_

Ara \_\_\_\_\_

Bong ni bung \_\_\_\_\_ Tabo \_\_\_\_\_

Bong ni Mate \_\_\_\_\_ Tabo \_\_\_\_\_

Ara \_\_\_\_\_

Bong ni bung \_\_\_\_\_ Tabo \_\_\_\_\_

Bong ni Mate \_\_\_\_\_ Tabo \_\_\_\_\_

Ara \_\_\_\_\_

Bong ni bung \_\_\_\_\_ Tabo \_\_\_\_\_

Bong ni Mate \_\_\_\_\_ Tabo \_\_\_\_\_

Ara \_\_\_\_\_

Bong ni bung \_\_\_\_\_ Tabo \_\_\_\_\_

Bong ni Mate \_\_\_\_\_ Tabo \_\_\_\_\_

Ara \_\_\_\_\_

Bong ni bung \_\_\_\_\_ Tabo \_\_\_\_\_

Bong ni Mate \_\_\_\_\_ Tabo \_\_\_\_\_

Ara \_\_\_\_\_

Bong ni bung \_\_\_\_\_ Tabo \_\_\_\_\_

Bong ni Mate \_\_\_\_\_ Tabo \_\_\_\_\_

Ara \_\_\_\_\_

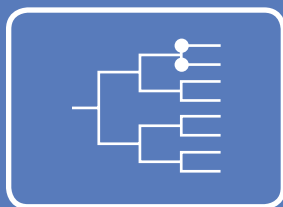
Bong ni bung \_\_\_\_\_ Tabo \_\_\_\_\_

Bong ni Mate \_\_\_\_\_ Tabo \_\_\_\_\_

# Au Tibutoru



Au Ikawai mai  
i roun Tamau







# Natiia Au Tibutoru

Mwakena te baaki irarikin te ara are ko a tia ni karaoa te otenanti n te tembora ibukina:

Ara \_\_\_\_\_  
 Bong ni bung \_\_\_\_\_ Tabo \_\_\_\_\_  
Bong ni Mate \_\_\_\_\_ Tabo \_\_\_\_\_

Ara \_\_\_\_\_  
 Bong ni bung \_\_\_\_\_ Tabo \_\_\_\_\_  
Bong ni Mate \_\_\_\_\_ Tabo \_\_\_\_\_

Ara \_\_\_\_\_  
 Bong ni bung \_\_\_\_\_ Tabo \_\_\_\_\_  
Bong ni Mate \_\_\_\_\_ Tabo \_\_\_\_\_

Ara \_\_\_\_\_  
 Bong ni bung \_\_\_\_\_ Tabo \_\_\_\_\_  
Bong ni Mate \_\_\_\_\_ Tabo \_\_\_\_\_

Ara \_\_\_\_\_  
 Bong ni bung \_\_\_\_\_ Tabo \_\_\_\_\_  
Bong ni Mate \_\_\_\_\_ Tabo \_\_\_\_\_

Ara \_\_\_\_\_  
 Bong ni bung \_\_\_\_\_ Tabo \_\_\_\_\_  
Bong ni Mate \_\_\_\_\_ Tabo \_\_\_\_\_

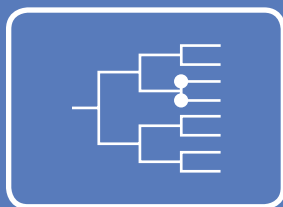
Ara \_\_\_\_\_  
 Bong ni bung \_\_\_\_\_ Tabo \_\_\_\_\_  
Bong ni Mate \_\_\_\_\_ Tabo \_\_\_\_\_

Ara \_\_\_\_\_  
 Bong ni bung \_\_\_\_\_ Tabo \_\_\_\_\_  
Bong ni Mate \_\_\_\_\_ Tabo \_\_\_\_\_

# Au Tibutoru



Au Ikawai mai  
iroun Tinau









# Natiia Au Tibutoru

Mwakena te baaki irarikin te ara are ko a tia ni karaoa te otenanti n te tembora ibukina:

Ara \_\_\_\_\_

Bong ni bung \_\_\_\_\_ Tabo \_\_\_\_\_

Bong ni Mate \_\_\_\_\_ Tabo \_\_\_\_\_

Ara \_\_\_\_\_

Bong ni bung \_\_\_\_\_ Tabo \_\_\_\_\_

Bong ni Mate \_\_\_\_\_ Tabo \_\_\_\_\_

Ara \_\_\_\_\_

Bong ni bung \_\_\_\_\_ Tabo \_\_\_\_\_

Bong ni Mate \_\_\_\_\_ Tabo \_\_\_\_\_

Ara \_\_\_\_\_

Bong ni bung \_\_\_\_\_ Tabo \_\_\_\_\_

Bong ni Mate \_\_\_\_\_ Tabo \_\_\_\_\_

Ara \_\_\_\_\_

Bong ni bung \_\_\_\_\_ Tabo \_\_\_\_\_

Bong ni Mate \_\_\_\_\_ Tabo \_\_\_\_\_

Ara \_\_\_\_\_

Bong ni bung \_\_\_\_\_ Tabo \_\_\_\_\_

Bong ni Mate \_\_\_\_\_ Tabo \_\_\_\_\_

Ara \_\_\_\_\_

Bong ni bung \_\_\_\_\_ Tabo \_\_\_\_\_

Bong ni Mate \_\_\_\_\_ Tabo \_\_\_\_\_

Ara \_\_\_\_\_

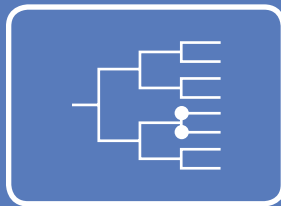
Bong ni bung \_\_\_\_\_ Tabo \_\_\_\_\_

Bong ni Mate \_\_\_\_\_ Tabo \_\_\_\_\_

# Au Tibutoru



Au Ikawai mai iroun  
Taman Tinau







# Natiia Au Tibutoru

Mwakena te baaki irarikin te ara are ko a tia ni karaoa te otenanti n te tembora ibukina:

Ara \_\_\_\_\_  
 Bong ni bung \_\_\_\_\_ Tabo \_\_\_\_\_  
Bong ni Mate \_\_\_\_\_ Tabo \_\_\_\_\_

Ara \_\_\_\_\_  
 Bong ni bung \_\_\_\_\_ Tabo \_\_\_\_\_  
Bong ni Mate \_\_\_\_\_ Tabo \_\_\_\_\_

Ara \_\_\_\_\_  
 Bong ni bung \_\_\_\_\_ Tabo \_\_\_\_\_  
Bong ni Mate \_\_\_\_\_ Tabo \_\_\_\_\_

Ara \_\_\_\_\_  
 Bong ni bung \_\_\_\_\_ Tabo \_\_\_\_\_  
Bong ni Mate \_\_\_\_\_ Tabo \_\_\_\_\_

Ara \_\_\_\_\_  
 Bong ni bung \_\_\_\_\_ Tabo \_\_\_\_\_  
Bong ni Mate \_\_\_\_\_ Tabo \_\_\_\_\_

Ara \_\_\_\_\_  
 Bong ni bung \_\_\_\_\_ Tabo \_\_\_\_\_  
Bong ni Mate \_\_\_\_\_ Tabo \_\_\_\_\_

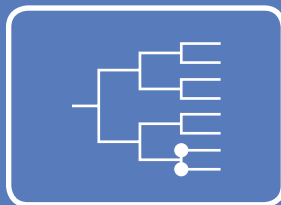
Ara \_\_\_\_\_  
 Bong ni bung \_\_\_\_\_ Tabo \_\_\_\_\_  
Bong ni Mate \_\_\_\_\_ Tabo \_\_\_\_\_

Ara \_\_\_\_\_  
 Bong ni bung \_\_\_\_\_ Tabo \_\_\_\_\_  
Bong ni Mate \_\_\_\_\_ Tabo \_\_\_\_\_

# Au Tibutoru



Au Itera mai iroun  
Tinan Tinan









# Natiia Au Tibutoru

Mwakena te baaki irarikin te ara are ko a tia ni karaoa te otenanti n te tembora ibukina:

Ara \_\_\_\_\_  
 Bong ni bung \_\_\_\_\_ Tabo \_\_\_\_\_  
Bong ni Mate \_\_\_\_\_ Tabo \_\_\_\_\_

Ara \_\_\_\_\_  
 Bong ni bung \_\_\_\_\_ Tabo \_\_\_\_\_  
Bong ni Mate \_\_\_\_\_ Tabo \_\_\_\_\_

Ara \_\_\_\_\_  
 Bong ni bung \_\_\_\_\_ Tabo \_\_\_\_\_  
Bong ni Mate \_\_\_\_\_ Tabo \_\_\_\_\_

Ara \_\_\_\_\_  
 Bong ni bung \_\_\_\_\_ Tabo \_\_\_\_\_  
Bong ni Mate \_\_\_\_\_ Tabo \_\_\_\_\_

Ara \_\_\_\_\_  
 Bong ni bung \_\_\_\_\_ Tabo \_\_\_\_\_  
Bong ni Mate \_\_\_\_\_ Tabo \_\_\_\_\_

Ara \_\_\_\_\_  
 Bong ni bung \_\_\_\_\_ Tabo \_\_\_\_\_  
Bong ni Mate \_\_\_\_\_ Tabo \_\_\_\_\_

Ara \_\_\_\_\_  
 Bong ni bung \_\_\_\_\_ Tabo \_\_\_\_\_  
Bong ni Mate \_\_\_\_\_ Tabo \_\_\_\_\_

Ara \_\_\_\_\_  
 Bong ni bung \_\_\_\_\_ Tabo \_\_\_\_\_  
Bong ni Mate \_\_\_\_\_ Tabo \_\_\_\_\_





# Kateirikian Au Utu

Ngai



Tamau



Tinau




FamilySearch

[Dotted box]

 Tibu te Unimwaane

[Dotted box]

 Tibu te Unnaine

[Dotted box]

 Tibu te Unimwaane


[Dotted box]

 Tibu te Unnaine

[Dotted box]

 Tibutoru te Unimwaane


[Dotted box]

 Tibutoru te Unnaine


[Dotted box]

 Tibutoru te Unimwaane

[Dotted box]

 Tibutoru te Unnaine

[Dotted box]

 Tibutoru te Unimwaane


[Dotted box]

 Tibutoru te Unnaine

[Dotted box]

 Tibutoru te Unimwaane

[Dotted box]

 Tibutoru te Unnaine

# Mwaneka ake Imwiina

Ngkai ko a tia n ikoikoti karaki ao rongorongoia am utu, ko riai:



## Karinii

rongorongo ake ko a tia ni ikoikotii n [FamilySearch.org](https://www.familysearch.org). Ngkana ko kainnanao te ibuobuoki, tuangiia kain te utu ke kain te uote ibukin te ibuobuoki.



## Nakon

te tembora n tei ibukiia am bakatibu, ke bubuti ibukin te ibuobuoki.



## Teimatoa Waaki Nako!

Kakaei rongorongo ao karaki ibukiia riki kaain am utu, ao buokiia tabeman ni karaoan aia mwakuri n te tembora.

“Ti kaungaia riki te roronrikirake ao kairake  
n ikawai ni kabonganai ibukukin te mwa-  
kuri n te tembora araia oin aia utu ke araia  
aia bakatibu kaain aia uote ke titeiki. Taan  
kairiiri n te Nakoanibonga a na taraia bwa  
kairake ao aia utu a na reiakina te reirei  
iaon rairan nanoia nakoia tamaia ao te  
kakabwaia ni kakawaran te tembora.”

First Presidency letter, Oct. 8, 2012

ANA EKARETIA  
**IESU KRISTO**  
IBUKIIA AIKA ITIAKI  
NI BOONG AIKA KAITIRA

KIRIBATI

