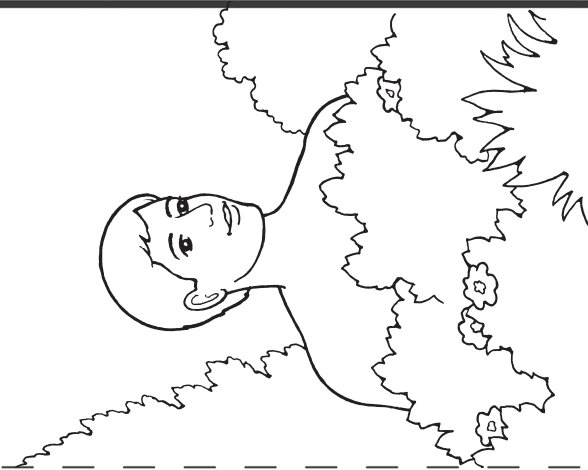


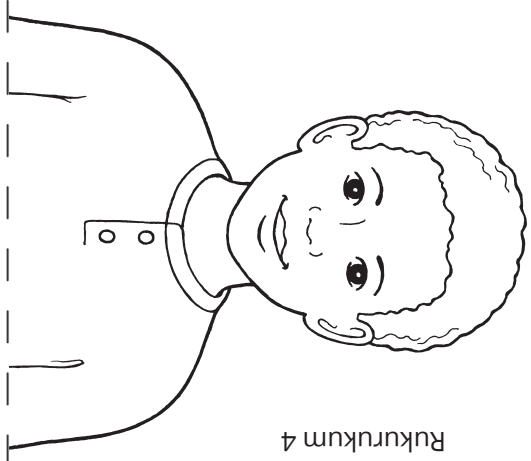
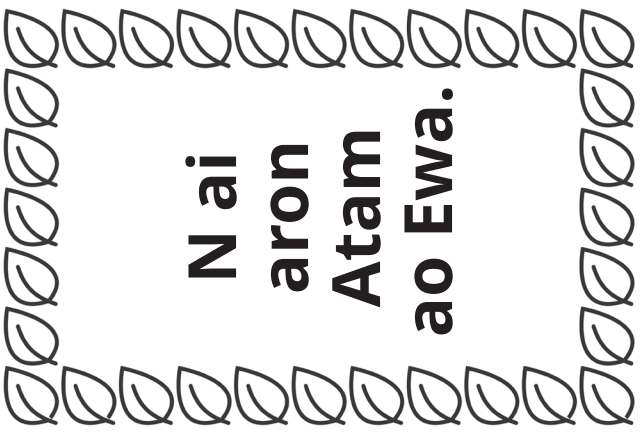
# Atam



Iai inaomatau.  
 Ngai Natin Te Atua.  
 I kona ni karekea te kimwareirei.  
 I roko i aon te aba.  
 I kona n reirei n ataakin te raioiroi man te buakaka.

Rukurukum 3

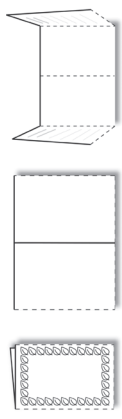
# N ai aron Atam ao Ewa.



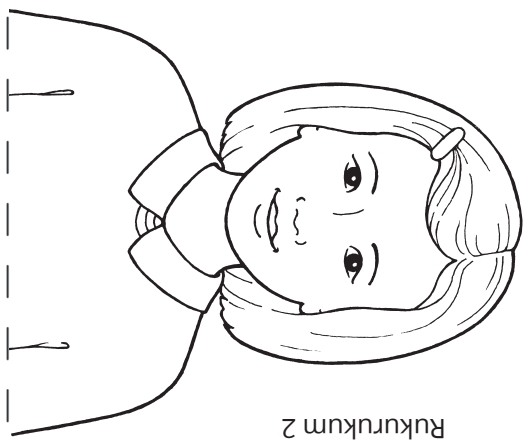
Rukurukum 4

E anganai te inaomata n rinerine te Atua (2 Nibwaai 2:11, 16, 27).

Korea te reketangoro iaon te rain are turu roroona. Ni karaoan te boki ae uareke, rukurukumi rain akana aki toma.

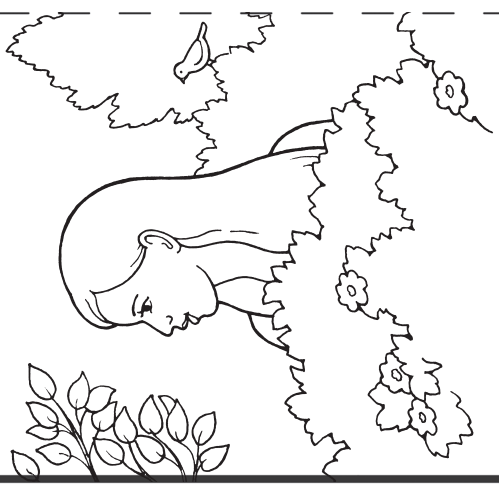


Rukurukum 1



Rukurukum 2

# Ewa



Aro riki tabeua ae I titebo iai  
 Ngai ma Atam ao Ewa:

---



---



---



---



---



---