

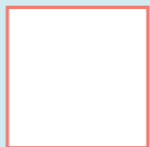
TĀPE'ARAA 'ĀREAREA

TE HIONA NŌ TE TAU TŌ'ETO'E 'E 'AORE NŌ TE TAU VE'AVE'A

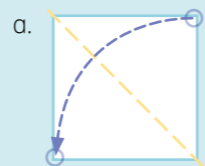
I raro a'e i te arata'ira'a a te Metua i te ao ra, 'ua poiete Iesu Mesia i te fenua 'e te mau mea ato'a i n'ia iho—'e tae noa atu te hiona. I te tahi mau vāhi o te ao nei, mai te tahi mau tuha'a nō Āfirita 'Apatō'a, Rāparata, 'Auterāria 'e Tirēni, te 'āva'e Tiurai e hiona iā. 'E noa atu ā, e mea ve'ave'a 'e e mea pūai te mahana i tō 'oe vāhi noho-ra'a, e nehenehe noa ā tā 'oe e hāmani i te hiona!

E nehenehe 'oe e hāmani i tā 'oe iho hōho'a hiona 'e 'aore rā e mā'iti i te hō'ē o teie mau hōho'a!

1. 'A hā'amata ma te hō'ē 'api parau 'ōrapa.

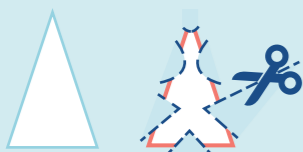


2. Tūfetu i te 'api 'ōrapa nā te 'āfara'a nō te hāmani i te hō'ē porotoru, 'e i muri iho tā'āfa fā'ahou iāna.

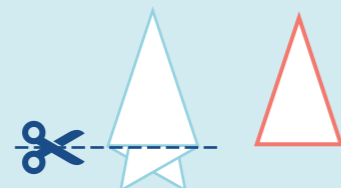


6. 'A hōhoro atu i te 'api parau nō te fā'a'ite mai i tā 'oe hiona!

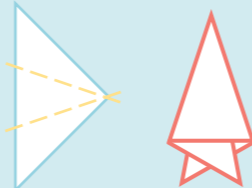
5. 'A vai tūfetu noa ai te 'api parau, 'a tāpūpū i te hō'ē hōho'a mai te au i tō 'oe hina'aro.



4. Tāpūpū i te mau hiti i n'ia roa.



3. Tūfetu i te porotoru 'ei toru tuha'a.



'Ē'A FA'AIHU NŌ TE PARAU 'ĀPĪ MAITA'I

'Ua tī'afa'ahou te Mesia, 'e i teienei, e taimē nō 'oe nō te fā'a'ite i te parau 'āpī maita'i i te mau ta'ata e rave rahi. 'A haere i te mau ta'ata ato'a nā n'ia i te mau āroa nō Ierusalemā i rāpae i te 'oire ma te 'ore e 'ōtohe.

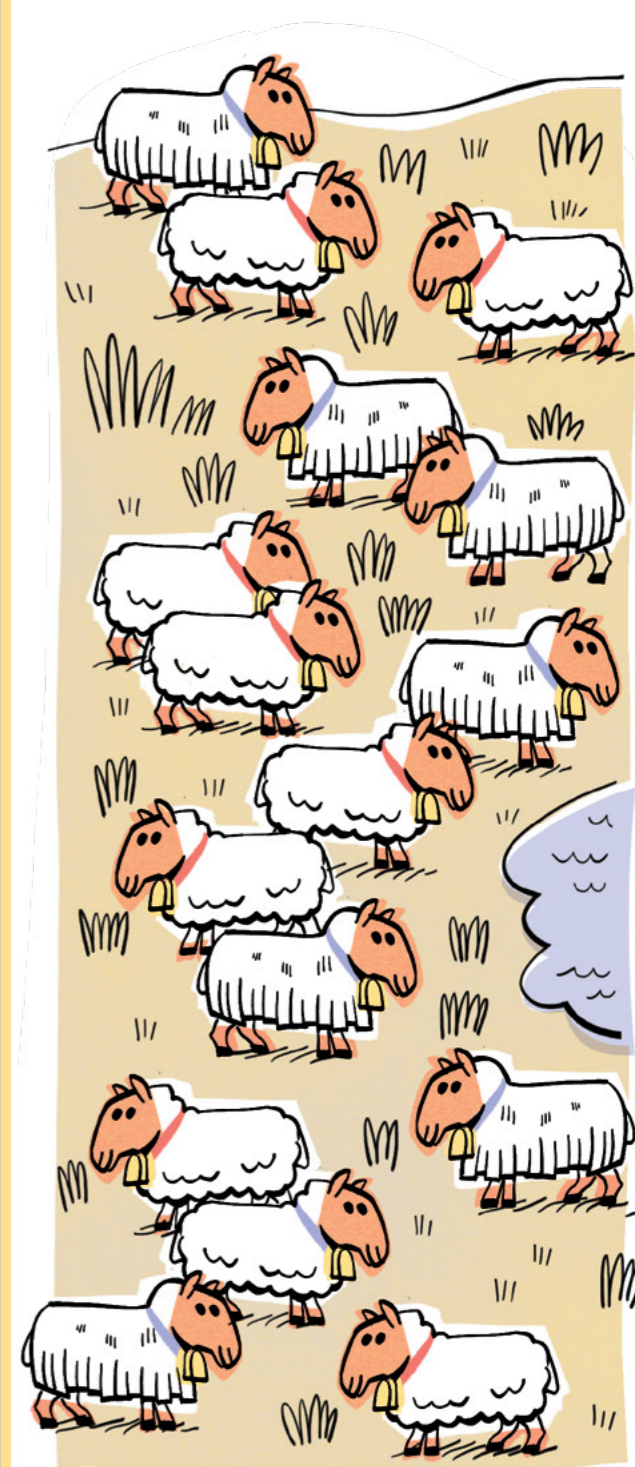


FA'AHŌHŌARAA NĀ JOSIH TALBOT

Te pāhonora'a i te 'api 31.

'IMI I TE TAA-'Ē-RA'A

'O vai te māmoē e 'ere mai te pae rahi o rātou?



Hi'o i te pāhonora'a i n'ia ia [ftsosy.ChurchofjesusChrist.org](https://www.ftsosy.ChurchofjesusChrist.org).