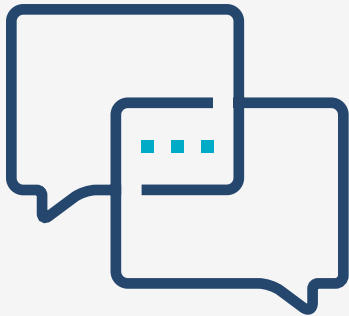
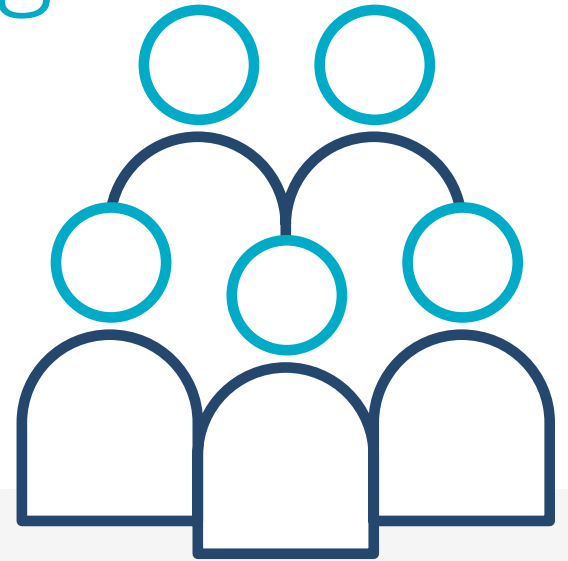


Institute Age Change

AWARENESS FOR 26-35-YEAR-OLDS

Highlight

- Extend the age of young adults invited to attend institute to include those aged 18-35.
- Classes offered in two age ranges, 18-25 and 26-35.
- This adjustment will allow for exciting new opportunities, tailored experiences, and deepened conversion to Jesus Christ.



Messaging

EMPHASIZE PRESIDENT RUSSELL M. NELSON'S PROMISES

“Learn how to let God prevail”
“Stay on the covenant path”
“Feel more joy”

Reaching 26-35-Year-Olds



Integration with 18-25

Encourage them to lead, lift, and serve those 18-25, as appropriate.



Service Opportunities

Provide meaningful service opportunities in harmony with the interest and availability of this group.



Councils & LDSSA Representation

Invite those in this age group to be part of councils and LDSSA. Encourage these organizations to foster awareness of this change to campus clubs and other relevant groups.



Social Media

Collaborate with this audience on social media strategy AND posts.



Activities & Interests

Consider accessibility, optimal timing, relevant topics, and even health-conscious foods for a more mature audience.

THE CHURCH OF
JESUS CHRIST
OF LATTER-DAY SAINTS

FAQS FOR THE YSA AGE CHANGES



Audience for FAQ:

- Internal S&I employees, particularly those responsible for defining institute classes and class sizes

HOW DO STUDENTS KNOW WHICH CLASSES ARE FOR WHICH AGE GROUP?

When creating a class in WISE, there is a new field called "Age Group." After selecting an age group for a class, that identification will display in myInstitute for that class. Intended age groups for a class may also be included in the class title in WISE. These expanded class titles from WISE will display to young adults in myInstitute.

WHO CAN PARTICIPATE IN INSTITUTE?

Young single adults are encouraged, and married young adults are welcome to participate, belong, and contribute at institute. This expanded age range will offer 26 to 35-year-olds exciting new opportunities, tailored experiences, and the chance to build something great at institute.

WHAT ARE SOME IDEAS THAT LOCAL PROGRAMS CAN UTILIZE IN REACHING OUT TO YOUNG ADULTS AGED 26-35?

Local programs may adapt the following types of ideas for reaching the 26 to 35-year-old young adults. Feel free to be innovative – this is not an exhaustive list:

- Work with local Church leaders to identify and encourage participation among young adults ages 26-35.
- Inform Church leaders of what institute will offer them.
- Encourage young adults to invite their friends.
- Collaborate with YSA and family wards using current communication channels (flyers, posters, social media, group chats, and so forth).
- Seek participation among 26-35-year-old young adults on the Institute Student Council and LDSA; support their efforts to be ambassadors to Church leaders and their peers.
- Highlight 26-35-year-old young adults on institute program's social media.

HOW DO WE DETERMINE IF WE OFFER CLASSES OR ACTIVITIES BASED ON AGE RANGE?

1. Determine the projected number of young adults among the 26- to 35-year-old age range that might participate in institute classes or activities using the Potential Students Quick Report (a key initial indicator may be the current number of young adult participants among the 26 to 30-year-old age range).
2. Conduct audience listening to assess if there are enough interested young adults to offer classes and/or activities for the 26 to 35-year-old age range.
3. Based on projected participation and audience listening, consider the feasibility of offering classes or activities specifically designed for the 26 to 35-year-old young adults.
4. Work in collaboration with YSA units to offer activities.

HOW DO WE NAVIGATE MOVING STUDENTS FROM ONE AGE RANGE CLASS OR ACTIVITY TO THE OTHER?

Effectively communicate which ages each class or activity is designed for, and then leave participation decisions to individual young adults.

Caution:

Use wisdom and judgement as you arrange classes and activities; your institute should be a safe environment for all students. Counsel with supervisors and intercede if environments are not safe.

HOW STRICTLY ARE THE AGE RANGES ENFORCED?

- Students are encouraged to select the classes that best fit their interests and schedule in the specified age range.
- Class division by age range is made so students are grouped with others in similar life circumstances.
- There is no requirement to divide the students strictly by age range.
- Unless there are safety issues, leaders and teachers should not generally enforce age-based participation.

WHAT OPPORTUNITIES EXIST TO INTEGRATE 26 TO 35-YEAR-OLDS WITH 18 TO 25-YEAR-OLDS?

Programs should look for opportunities to build community between these two groups. Those in the older age range have much to contribute and should be invited to serve in meaningful ways such as mentoring, facilitating workshops, sharing how they let God prevail in making important decisions, etc.

WHO DO I CONTACT IF I HAVE QUESTIONS?

Please refer to your program administrator for any questions.



RESOURCES

For more information, visit the Institute FAQ at:
[ChurchofJesusChrist.org/si/institute/about/faq](https://www.ChurchofJesusChrist.org/si/institute/about/faq)