

Ol Ansa abaot Tempol

Insaed long tempol, i olsem wanem?

Tempol hem i haos blong Lod. Hem i klin mo i naes tumas insaed. Evriwan oli werem waet mo oli traem blong stap revren. Hem i wan ples we i gat pis blong wosipim God, lanem, mo filim lav blong Sevyu tru long Tabu Spirit.



?Ol man oli stap mekem wanem insaed long tempol?

Insaed long tempol, yumi lanem abaot plan blong God mo mekem **ol kavenan** wetem Hem. Yumi mekem hemia taem yumi tekpat long **ol odinens** olsem ol baptaes, ol konfemesen, mo stap sil i go long ol famli blong yumi.



?Bae mi dresap olsem wanem taem mi go long tempol?



Yu mas werem naes klos blong yu i go long tempol. Taem yu go insaed, bae yu jenis long ol spesel klos blong mekem ol odinens. Blong ol baptaes, ol

wokman insaed long tempol bae oli givim yu wan waet ovarol blong werem.

?I minim wanem blong mekem ol baptaes blong ol dedman?

Insaed long tempol, yu save mekem baptaes long bihaf blong olgeta we oli ded be oli no bin baptaes. Bae yu werem waet mo yu draon insaed (draon gud evriwan andanit) long wota.



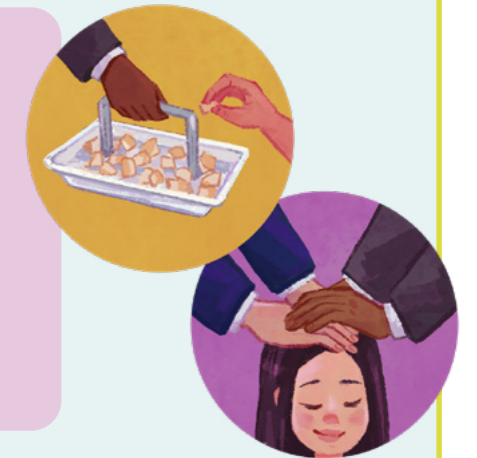
?Wanem i wan tempol rekomen?

Wan tempol rekomen i wan smol pis pepa we i givim raet long yu blong go insaed long tempol. Yu save karem wan tru long wan memba blong bisoprik o branj presidensi blong yu. Bae hem i askem yu sapos yu stap kipim ol komanmen mo sapos yu gat wan testemoni. Sapos yu klin inaf mo rere blong go insaed long tempol, bae hem i givim wan tempol rekomen long yu.



?WANEM I WAN PRISHUD ODINENS?

Wan prishud odinens hem i wan tabu aksen we oli mekem wetem atoriti mo paoa we i kam long God. Baptaes, konfemesen, mo sakramen oli ol odinens we i stap hapen aotsaed long tempol. Ol tempol baptaes, ol endaomen, mo ol siling oli ol odinens we i stap hapen insaed long tempol.



PAPA LONG HEVEN



YUMI

?WANEM I WAN KAVENAN?

Wan kavenan i wan tu rod promes we yumi mekem wetem Papa long Heven. Yumi promesem Hem sam samting, mo Hem i promes blong stap wetem yumi mo blesem yumi.