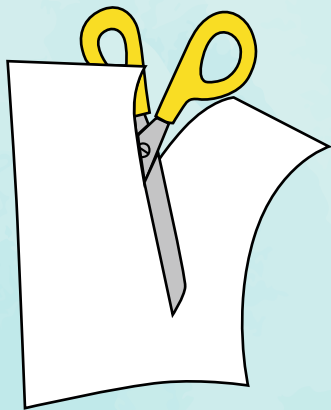


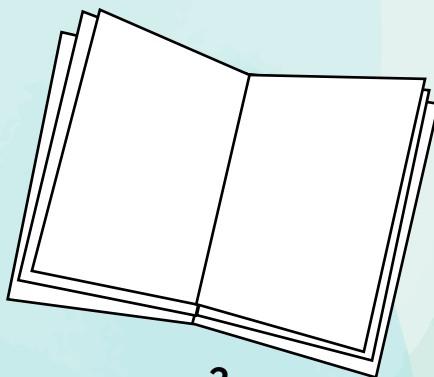
# Buka ha'amana'ora'a nō te BĀPETIZORA'A

'A hāmani i te hō'ē buka nō te tauturu ia 'oe 'ia ha'amana'o i tō 'oe bāpetizora'a. Mai te mea 'aita ā 'oe i bāpetizohia, 'a hāmani i tā 'oe buka nō nī'a i te huru 'ia bāpetizo-and'e-hia 'oe.



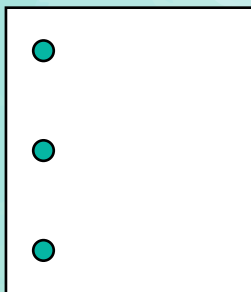
1.

Tāpū e piti tuha'a 'api parau nā te 'āfara'a. 'A tu'u fa'ahou i te tahi ā mau 'api parau, mai te mea e hina'aro 'oe i te hō'ē buka roa a'e.



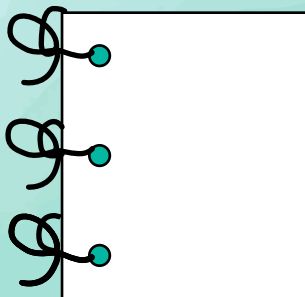
2.

'A āpapa i te mau 'api parau 'e 'a tūfetu i te reira nā te 'āfara'a.



3.

Pātia e toru 'āpo'o nā nī'a roara'a o te tūfetu'a o te mau 'api parau.



4.

E tā'amu i te hō'ē taura nā roto i te 'āpo'o tāta'itahi.



## MAU MANA'O NŌ TĀ 'OE BUKA

I teienei, 'ua ineine 'oe nō te fa'a'i i tā 'oe buka i te mau ha'amana'ora'a o tō 'oe bāpetizora'a ! Teie te tahi mau mana'o :

- Hō'ē hōho'a pāpā'i 'aore rā hō'ē hōho'a nō tō 'oe bāpetizora'a
- Tō 'oe 'itera'a pāpū
- Nāhea 'oe i te fa'a'ineinera'a ia 'oe nō tō 'oe bāpetizora'a
- Nā vai 'oe i bāpetizo 'e i ha'amau
- E aha tā 'oe i fāri'i i te taime 'a bāpetizohia ai 'oe
- Nāhea 'oe i te ha'apa'o i tā 'oe mau fafaura'a nō te bāpetizora'a