

Ngaahi Notá mo e Mālōlōó

'Oku talamai 'e he ngaahi **nota** mūsiká 'a e taimi ke tau hiva aí. 'Oku 'i ai foki mo ha ngaahi faka'ilonga 'i he mūsiká 'oku ui ko e **mālōlō**. 'Oku talamai 'e he mālōlōó 'a e taimi ke tau *longo* aí. 'Oku fakatou 'i ai ha **taimi** 'i he notá mo e mālōlōó ke fakahaá'i 'a hono lōloá.



lau 1



lau 2



lau 1

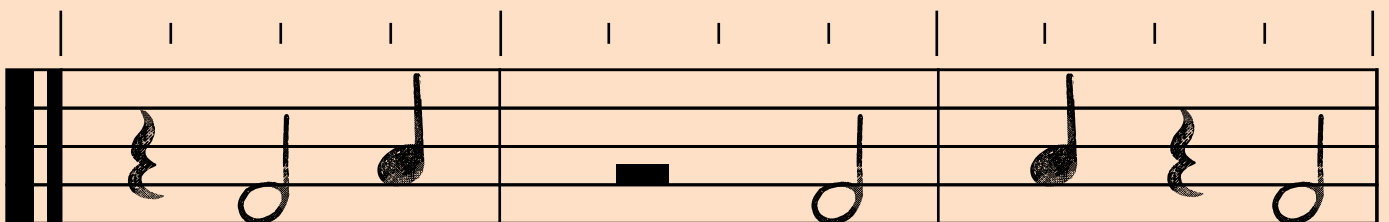
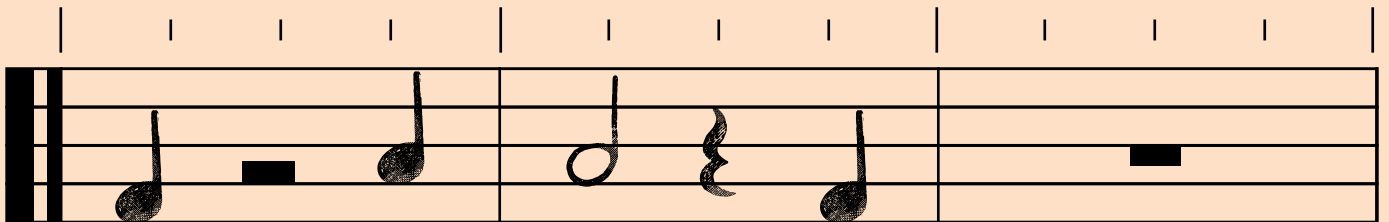
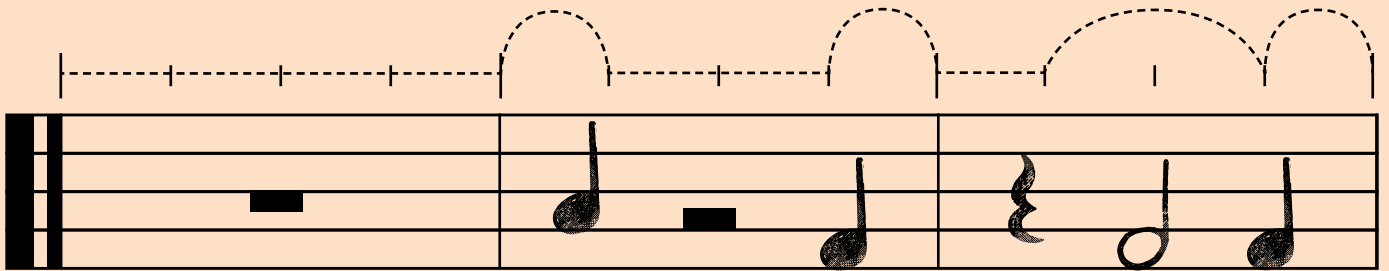


lau 2



lau 'e 4

Faka'aonga'i 'a e fanga ki'i nota mo e mālōlō 'i laló ke tā ha ngaahi laine mei he toti ki he toti! Tā ha laine ngaofe ki he notá pea laine hangatonu ki he mālōlōó. 'Oku fenāpasi 'a e lahi 'o e laine ngaofé mo e fuoloa 'a e taimi 'o e fo'i notá. Kuo fakakakato ha taha ke fakahaá'i atu hono foungá.



Ko e hā 'a e hiva Palaimeli 'okú ke sai'ia taha aí?